

# LETATWIN LM-3000PRO

## PC Software & Printer firmware

### Download manual

May 26, 2026

*\*Please use the printer firmware and PC software in their latest versions respectively.*

#### <1. Contents>

##### 1. Before downloading:

- 1-1) How to check your version information.
- 1-2) How to check the latest version (refer to the Release notes).

##### 2. Download method:

- 2-1) How to download PC software to your PC.
- 2-2) How to download the printer firmware to your printer.

## <2. Download Manual>

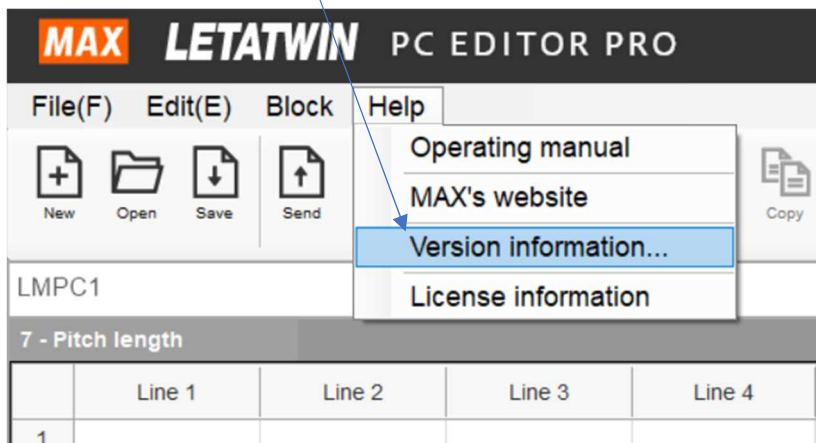
### 1-1) How to check your version information:

The PC application software "LETATWIN PC EDITOR PRO" and the printer firmware on the printer itself, it is necessary for both to be the latest version when in use, so please check the version using the method below before downloading.

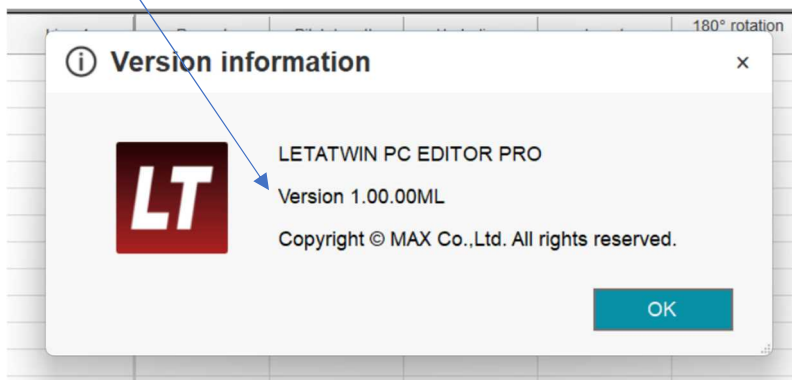
(If you are already using the latest version, there is no need to download it.)

How to check the version of the PC application software "LETATWIN PC EDITOR PRO" :

Click on Version information in Help.



Version is displayed; please check this value.



How to check the firmware version of the printer :

Please check the version information from the Help button.



1-2) How to check the latest version (refer to the Release notes):

There is a document called 'Release Notes' in the download section of the homepage, please check the latest version listed there.

Software & Firmware

When using this software, you must ensure that the software version matches the firmware version.  
Please refer to the release notes for the latest version information.

Download

Release Notes

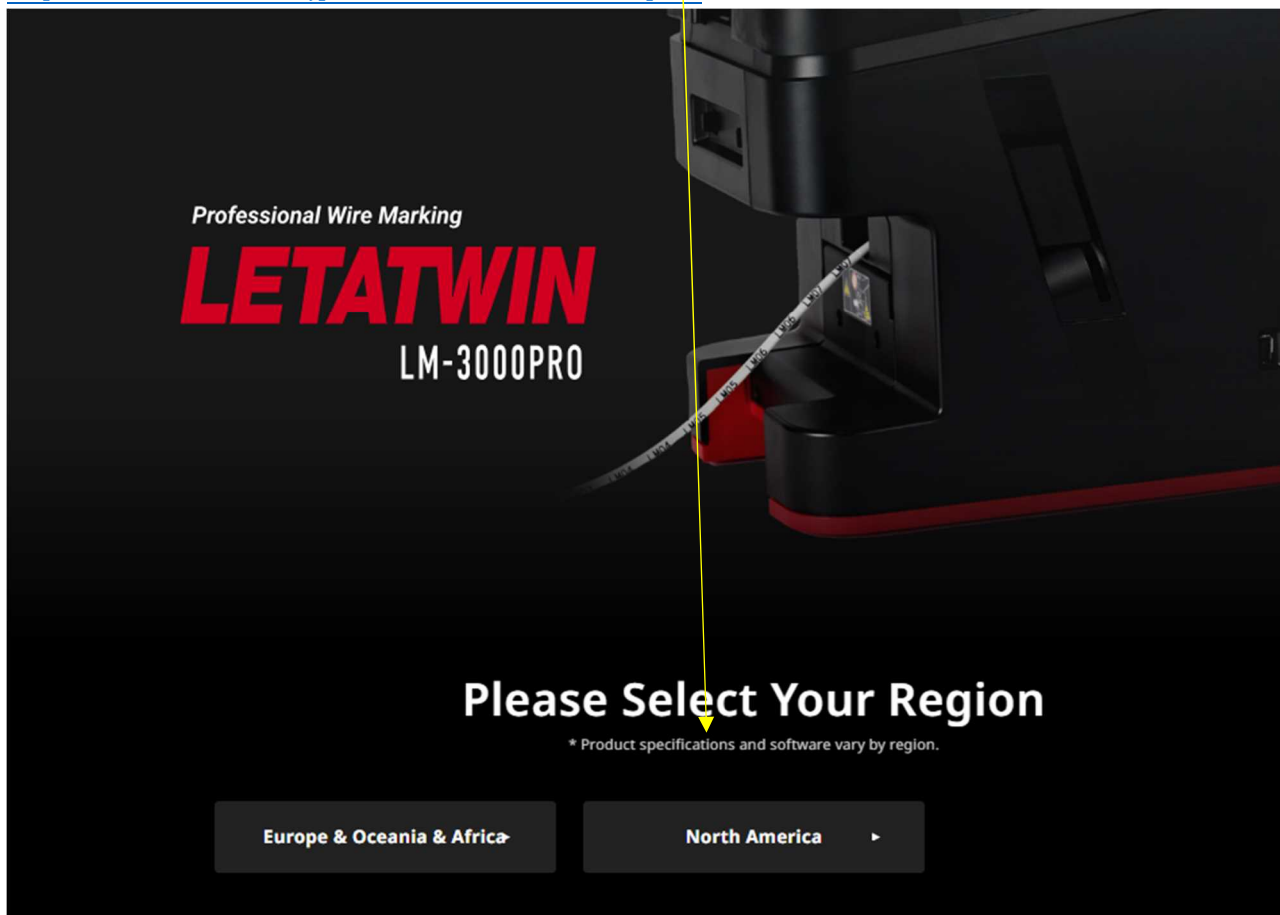
Supported Models	Release Date	Printer firmware		LETATWIN PC EDITOR PRO App (PC Software)	
		version	Modifications	Version	Modifications
LM-3000PRO	26.04.22	1.30	Fixed an issue with print distance compensation when "Off" is selected in "Pitch cutting." Added a feature to automatically create a root folder on a USB drive. Fixed the cumulative print distance monitoring item.	Ver 1.1.0.0	There are no new features or fixes in this release.
LM-3000PRO	26.05.14	1.40	Extended the pitch length of the tape and marking strips.	Ver 1.2.0.0	Extended tape and label pitch lengths. Fixed an issue with loading LMF files. Fixed an issue with copying and pasting in drop-down lists. Fixed an issue with inch display. Fixed an issue caused by unsupported characters when saving CSV files.

\*Please ensure that both the printer firmware and LETATWIN PC EDITOR PRO (Software) are updated to their latest versions.

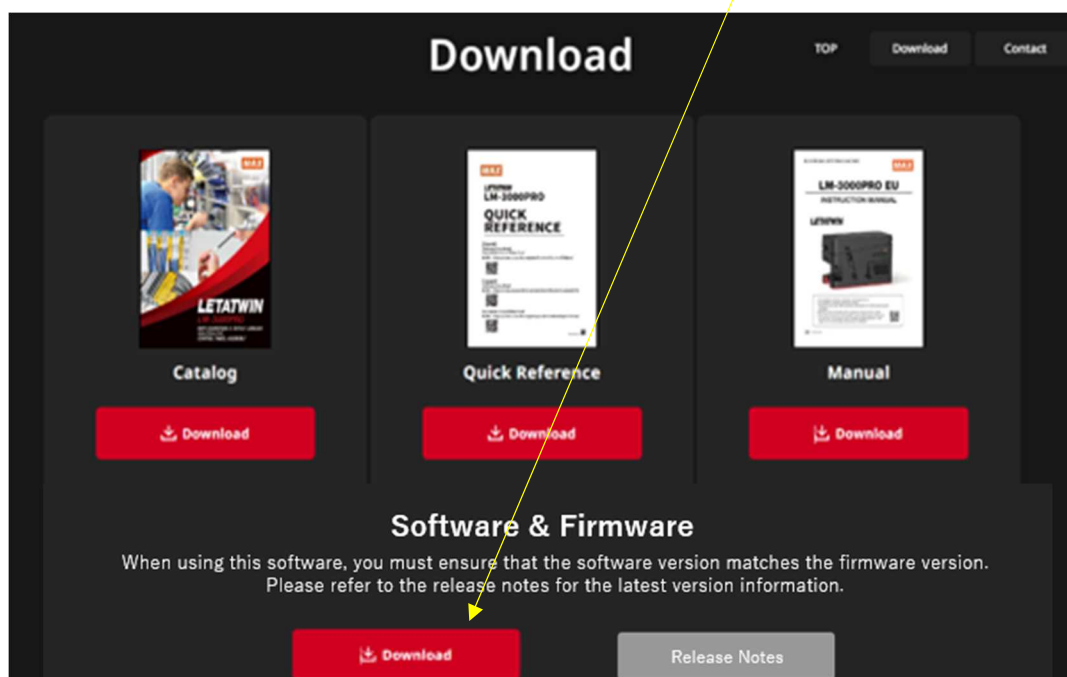
## 2-1) How to download PC application software to your PC

Please access the following site and select your area.

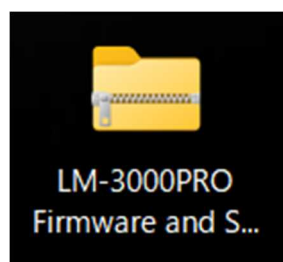
<https://www.max-ltd.co.jp/int/letatwinfan-lm-3000pro/>



For example, for users in the EU area, click Europe and then Download on the web page. Proceed and click "Download" under "Software & Firmware".

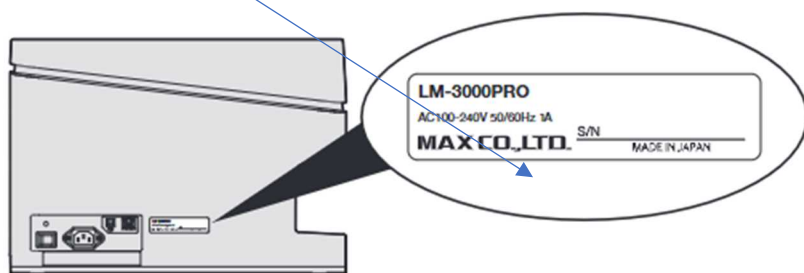


Open the compressed file and click on 'LETATWIN PC EDITOR PRO\_Installer'.



LETATWIN PC EDITOR PRO_Installer_v1.2.0.0	2026/05/27 10:38
LM-3000PRO Printer firmware V1.40	2026/05/27 10:41
LM-3000PRO Download Manual EN 260527	2026/05/27 10:49
LM-3000PRO_Release Note example EN 260527	2026/05/27 10:52

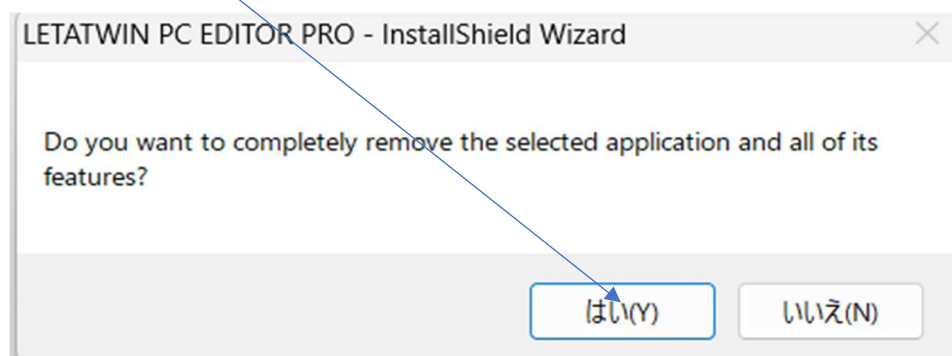
Check the model name of the printer in use and click the Setup for that model.



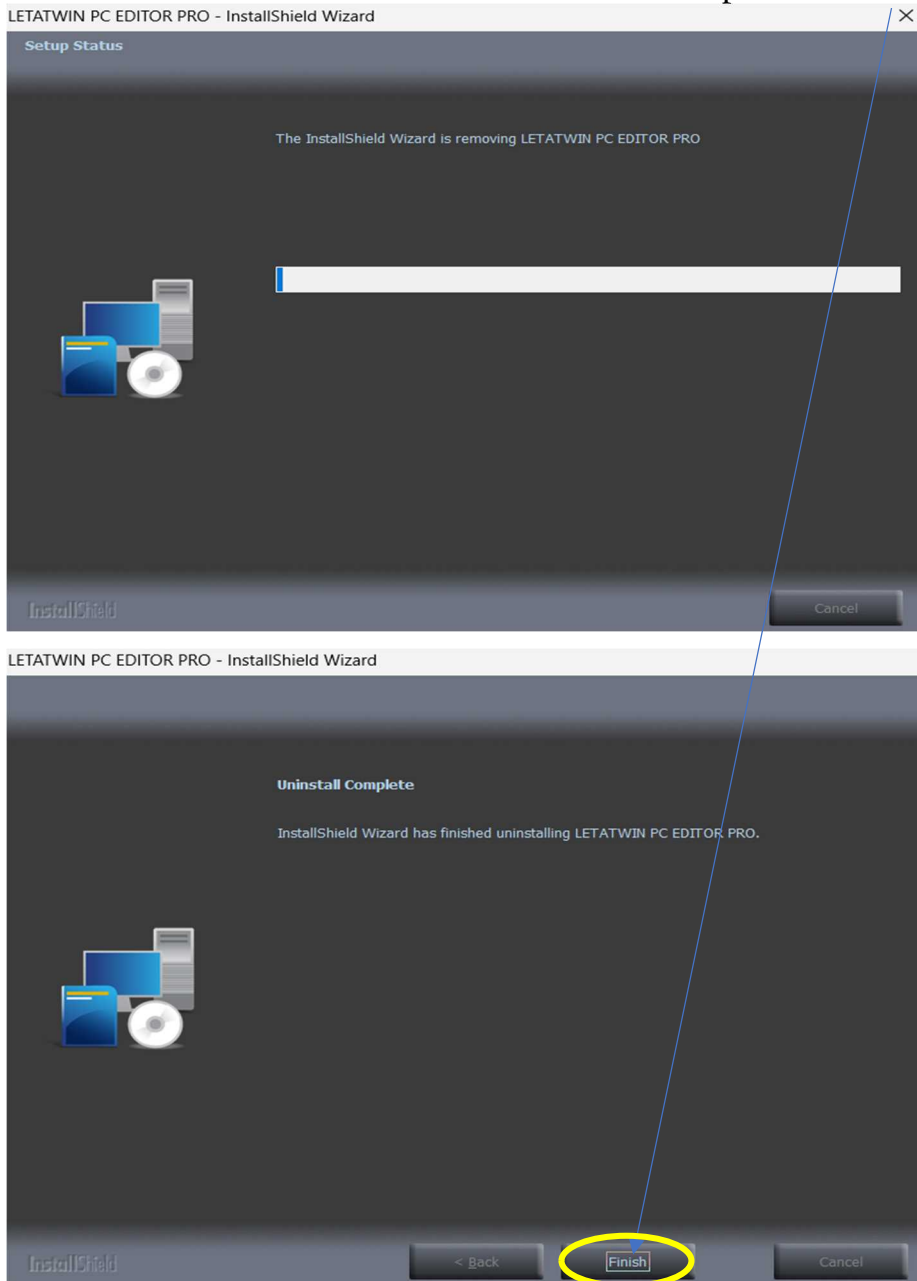
Example: For EU area users, click EU\_Setup.

LetatwinPro_CN_Setup	2026/05/27 10:38
LetatwinPro_EU_Setup	2026/05/27 10:38
LetatwinPro_JP_Setup	2026/05/27 10:38
LetatwinPro_KR_Setup	2026/05/27 10:38
LetatwinPro_ML_Setup	2026/05/27 10:38
LetatwinPro_TH_Setup	2026/05/27 10:38
LetatwinPro_TW_Setup	2026/05/27 10:38
LetatwinPro_US_Setup	2026/05/27 10:38

If you have already downloaded PC EDITOR PRO, you need to uninstall the software once, so please click YES.



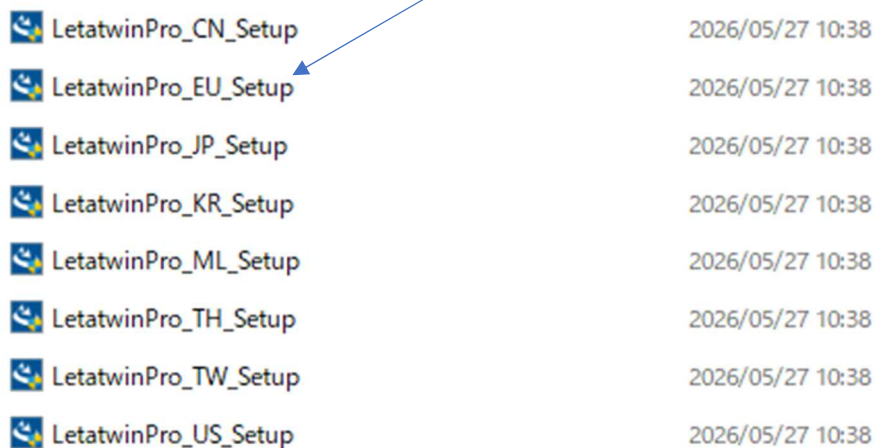
When the uninstallation starts and the Complete screen appears, click Finish.



Open the Installer folder again and click the Setup with the same model name.

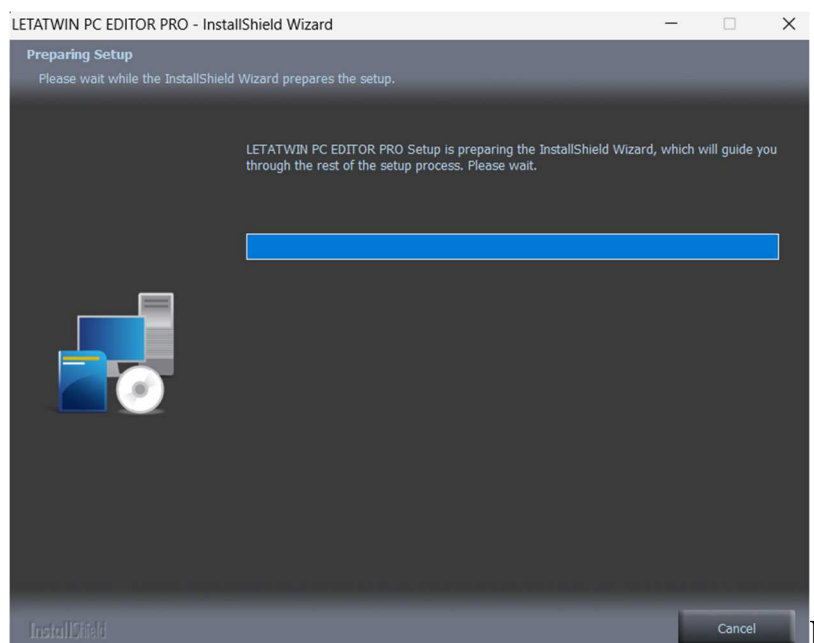
LETATWIN PC EDITOR PRO_Installer_v1.2.0.0	2026/05/27 10:58
LM-3000PRO Printer firmware V1.40	2026/05/27 10:41
LM-3000PRO Download Manual EN 260527	2026/05/27 10:49
LM-3000PRO_Release Note example EN 260527	2026/05/27 10:52

Example: For EU area users, click EU\_Setup.



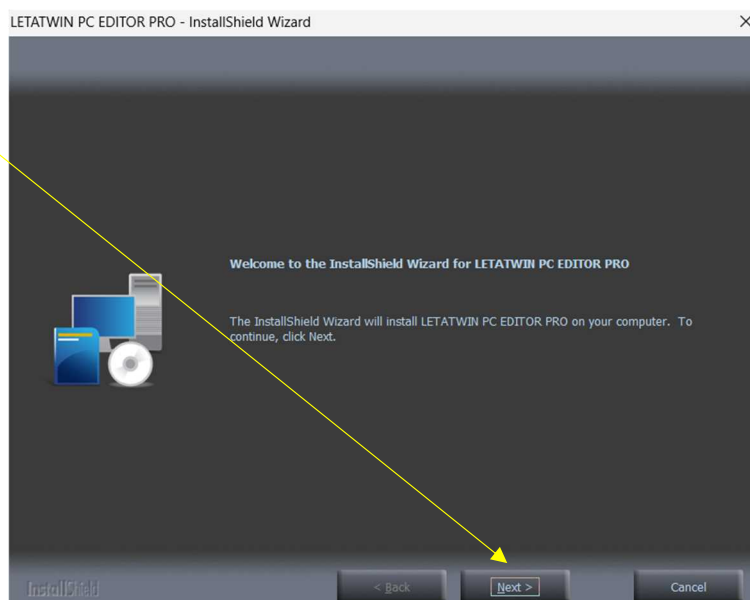
LetatwinPro_CN_Setup	2026/05/27 10:38
LetatwinPro_EU_Setup	2026/05/27 10:38
LetatwinPro_JP_Setup	2026/05/27 10:38
LetatwinPro_KR_Setup	2026/05/27 10:38
LetatwinPro_ML_Setup	2026/05/27 10:38
LetatwinPro_TH_Setup	2026/05/27 10:38
LetatwinPro_TW_Setup	2026/05/27 10:38
LetatwinPro_US_Setup	2026/05/27 10:38

The following screen will be displayed, and setup preparation will begin.



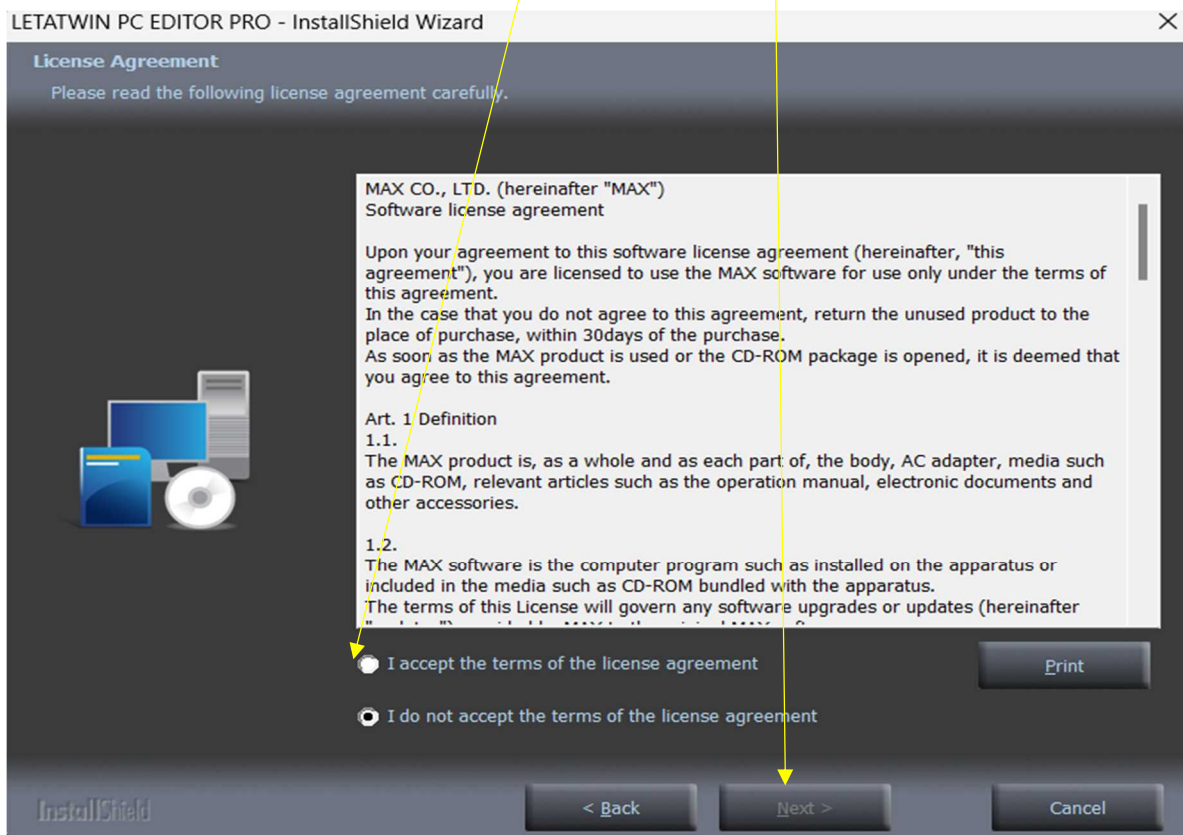
When the installation is complete, the following screen will be displayed. Please click

Next.

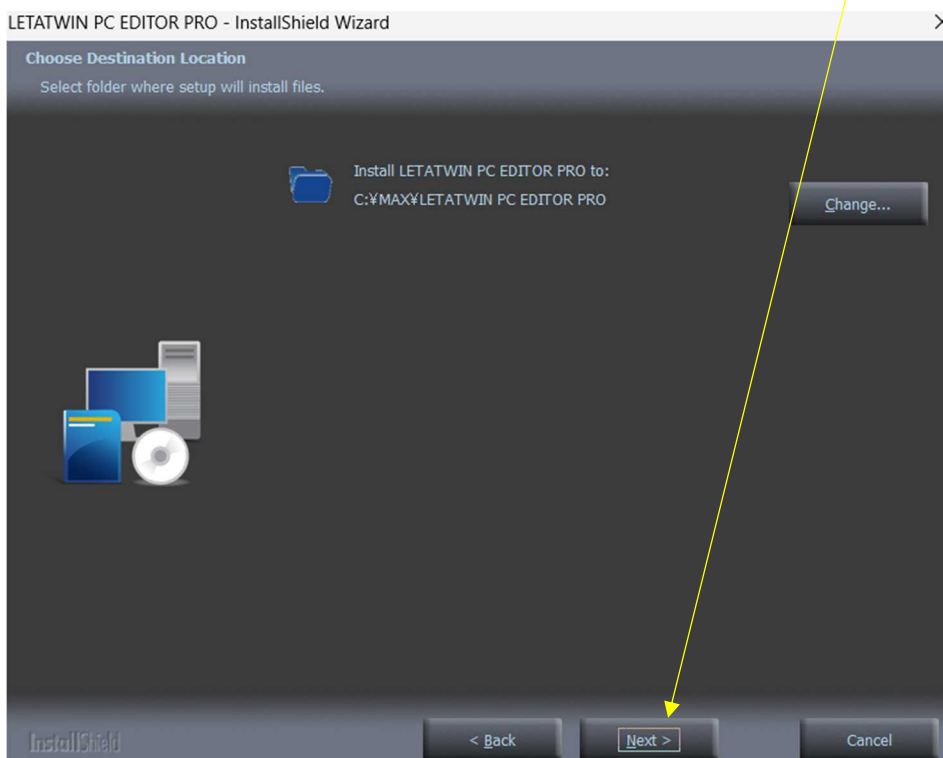




The software license agreement will be displayed. If there are no issues after reviewing the contents, Please check 'I accept' and click Next.

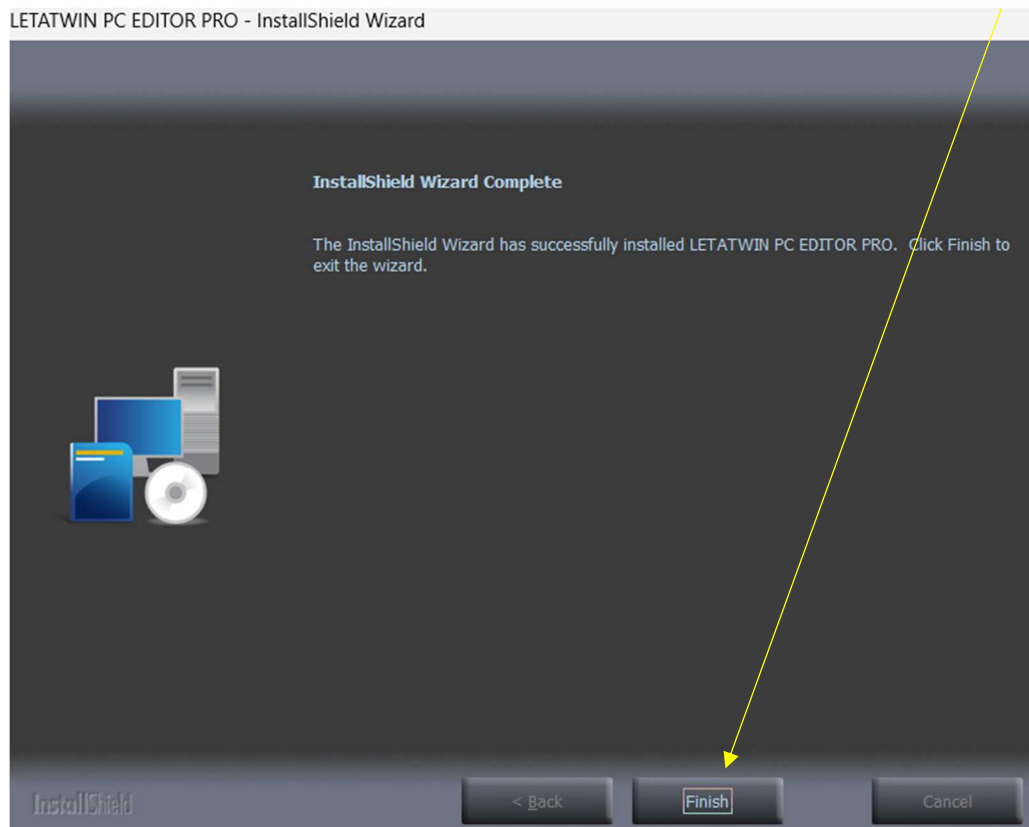


The saving folder will be displayed. If there are no problems, please click Next.





The installation will start, and when the following screen appears after completion,







It is complete when the icon appears on the desktop.



## 2-2) How to download the main firmware to the printer:

Please click on the printer firmware.

 LETATWIN PC EDITOR PRO_Installer_v1.2.0.0	2026/05/27 10:38
 LM-3000PRO Printer firmware V1.40	2026/05/27 10:41
 LM-3000PRO Download Manual EN 260527	2026/05/27 10:49
 LM-3000PRO_Release Note example EN 260527	2026/05/27 10:52

Please insert it into the USB port.

LM3000PRO\_firmware.VUP

2026/05/27 10:41

Save the following file directly to the root of the USB memory, and insert the USB to the connection gate on the left side of the printer's LCD screen.



After that, please perform the following operations on the printer itself to download the firmware to the printer. It is complete when the message 'Done Reboot' is displayed and the printer restarts.

